

13th Poverty
and
Environment
Partnership
Meeting

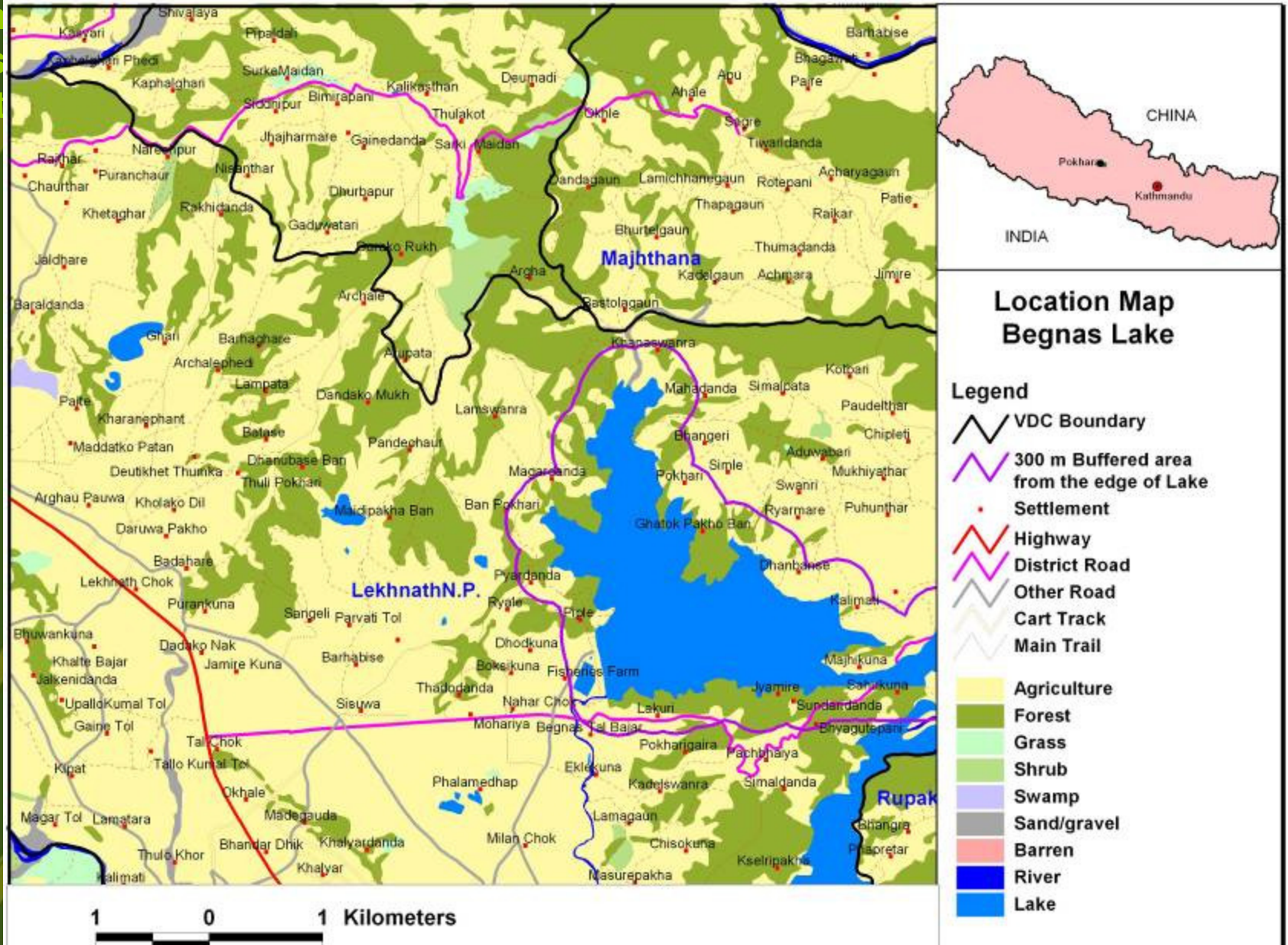
From Community Forestry to Integrated Resource Management in Nepal



Resource Management for Sustainable Livelihoods in Nepal

- Research Project under the Challenge Programme on Water and Food
- SEI, IWMI, WWF
- Build on experience in Community Forestry
- Examine scope for extending FUG to be integrated resource management institutions
- Develop inter-group structures
- Examine scope for PES mechanisms

Begnas Watershed



The Starting Point

- FUGs effective and unifying within hill communities: forest & water improved
- Developing into broader social development institutions
- Formal water groups ineffective & area had conflicts over water management
- Traditional water groups working within individual villages
- No mechanisms for upper-lower catchment interactions

What Happened?

- Initial surveys: stakeholders recognised need for interaction, but not mechanism
- Maoist insurgency: 3 year gap in the study
- Returned to hill area early 2007: FUGs survived, main community institution
- Conflicts over water allocations deepened
- Infrastructure maintenance and management in disarray
- Consensus on need to build institutions for inter-community interactions



Building a Platform for Inter-Group Dialogue & Decision-Making

- Project shows demand for & potential of inter-group interactions
- Established a platform for agreeing water allocation, management regimes between upstream & downstream groups
- Local NGO facilitator, local government involved.
- Will it work? Time will tell, but demand is there