

**13th Poverty  
and  
Environment  
Partnership  
Meeting**

# **Poverty Environment Climate Mainstreaming in Bangladesh**

**A.K.M. Khorshed Alam  
Joint Chief, General Economics Division  
Planning Commission, Govt. of Bangladesh**

**and**

**M. Aminul Islam  
Assistant Country Director  
UNDP, Bangladesh**

## Poverty environment climate

- 1. Natural resources and environment matter for poor people, especially poor women** – livelihoods, health and vulnerability ;
- 2. Livelihoods depend on Natural resources:** fisheries, agriculture, biomass for energy;
- 3. Health:** sanitation, water, indoor air pollution;
- 4. Climate and vulnerability:** disasters and gradual sea level rise, salinity increase, drought and changing weather;
- 5. Empowerment, governance and conflict:** access rights and conflict over environmental assets

## **Poverty Environment Climate Mainstreaming: Bangladesh Context**

- **Change decisions (budgets, investment, policies) that impact on pro-poor environment outcomes**
- **Many key decisions not controlled by environment agencies**
- **Need to engage with other parts of government and society**
- **Focus on national planning, sectoral planning, budgets, local government system**

## Poverty Environment Climate: challenges of implementation

- ❖ “Awareness” undermined by perverse institutional and economic incentives;
- ❖ Local government lack knowledge, experience;
- ❖ Key agencies lack staff and resources;
- ❖ Elite control of key natural resources;
- ❖ Many policies & studies, but implementation weak;
- ❖ Lack of national fora to link development and environment



# Poverty Environment Climate: Opportunities

- ✓ **Government commitment to improve implementation and enforcement;**
- ✓ **Stronger local government focus;**
- ✓ **Media and NGO activism;**
- ✓ **Rising profile of climate change and disasters;**
- ✓ **Significant UNDP programme synergies to support poverty, environment, climate mainstreaming**

An aerial photograph of a densely populated city, likely in South Asia, showing a network of narrow streets and a prominent river or canal system. The image is used as a background for the slide.

## PEC Mainstreaming Programme

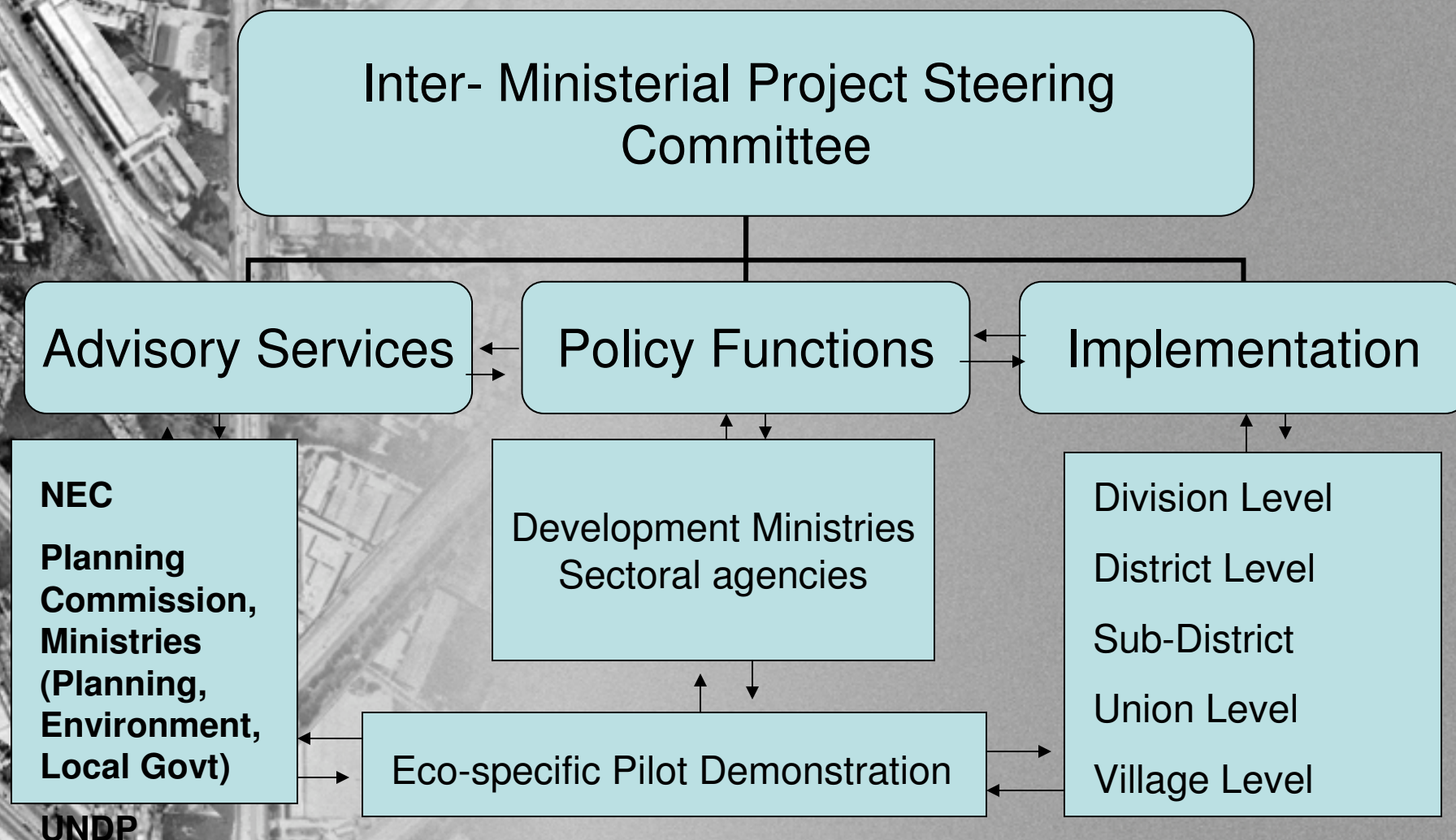
- National: planning & budgets (e.g. Poverty Reduction strategy, Project Proforma)
- Local level: local planning and budgeting (Guidelines and performance assessment for local government (UP) finances)
- Demonstration Pilots in selected eco-systems (e.g. Chittagong, Khulna, Barind)
- Leverage other UNDP on-going and future programmes (MDG, local governance, disaster/climate, urban, GEF)



# Key Forces of PEI Mainstreaming

- Lack of policy and legal instruments in support of sustainable development and non-compliance with policies and standards
- Inadequate capacity at institutional and systemic levels
- Use of productive land and forests for other purposes
- Population growth, frequent disasters and poverty
- Weak Local Government Institutions
- Inadequate consideration of environmental aspects into development programs and projects and monitoring
- Inadequate integrated planning and implementation

## Institutional Arrangement for Mainstreaming Poverty-Environment Climate



# Way Forward

- ✓ Operationalization of mainstreaming requires operating in a multi-ministerial framework;
- ✓ Linking local level experience and priorities with policy and planning processes
- ✓ Deepening of PEC resilient development within the frame of horizontal and vertical linkages in planning process;
- ✓ Sharing poverty-environment updates with all the sectoral focal point and Planning and Finance people in particular at a regular basis;
- ✓ Analyzing poverty-environment links
- ✓ Reducing poverty with environment given priority;